

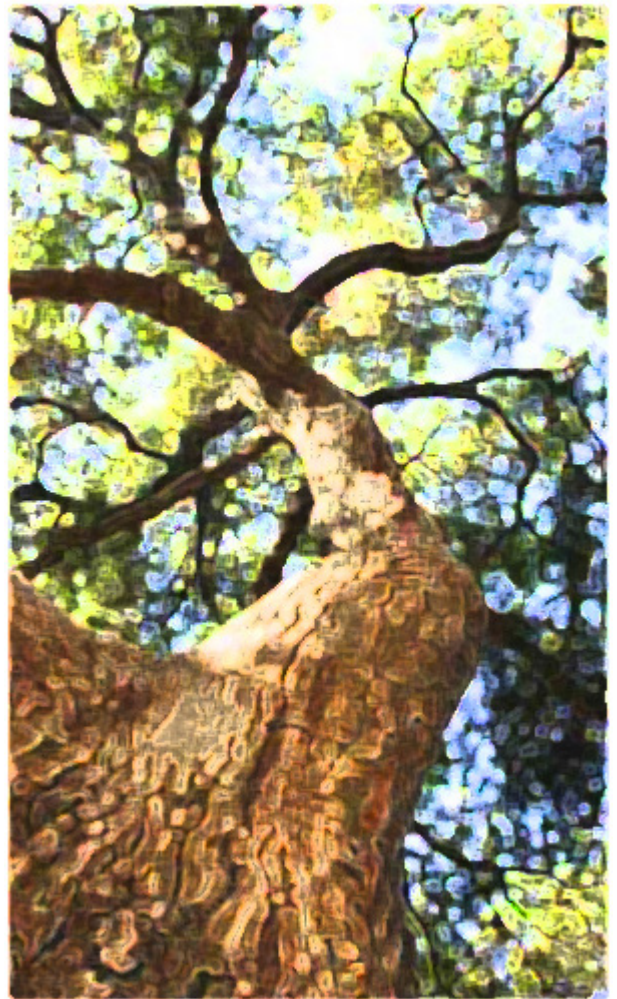
Sudden Oak Death Outreach in Sonoma County

09-DG-11052021-175

Interim Progress Report, January-June 2010

For USDA Forest Service, State & Private Forestry

Prepared by Lisa Bell, Paul Vossen, and Deborah
Curle, Sonoma County UC Cooperative Extension



Sudden Oak Death Outreach in Sonoma County January-June 2010

The Sonoma County UC Master Gardeners SOD Specialists directly contacted 1,448 people in their educational activities between January and June 2010. Outreach included public presentations, promotions at markets and fairs, and a county-wide SOD Blitz—a citizen & scientist collaboration tool for mapping the disease and educating the public. In addition, an unknown number of people were reached through a public television broadcast on which a Sonoma County MG SOD Specialist was interviewed about sudden oak death. See table below.

Activities

Date	Location	Contacts
1/20/2009	Santa Rosa, Luther Burbank Art & Garden Center	52
2/1/2010	Community Media Center interview, for TV broadcast	?
2/6/2010	Healdsburg Library	22
2/23/2010	Sonoma Mountain Garden Club	12
2/24/2010	SRJC Shone Farm, Integrated Pest Mgmt class	30
3/8/2010	MG training class	40
3/13/2010	Armstrong Redwoods State Park	12
3/18/2010	Bennett Valley Grange, Homeowners' Association	58
4/10/2010	Rohnert Park Library	9
4/17/2010	SOD Blitz, Santa Rosa	38
4/17/2010	SOD Blitz, Healdsburg	20
5/22/2010	Rincon Valley Library	20
6/5/2010	Petaluma Library	17
6/6/2010	Blooming Backyards Garden Tour	40
6/19/2010	SOD Blitz results meeting	35
ongoing	SOD-related questions answered by MG specialists at the UCCE information desk. Staffed 4-6 hrs/day, 5 days/week.	43
ongoing	Farmers' Markets in Cotati, Healdsburg, Oakmont, Occidental, Petaluma, Santa Rosa, Sebastopol & Sonoma	1000
Total contacts:		1,448

Presentations were made at 12 public meetings, continuing the MG SOD Specialists' average of two presentations each month. The clientele included the general public, junior college IPM students attending an integrated pest management class, a garden club, a homeowners' association and state park naturalists. The MGs continued their presence at farmer's markets and answered SOD-related questions at the information desk at the Santa Rosa UCCE office.

SOD Blitz

A SOD Blitz is an unconventional education event and disease-mapping tool developed by Dr. Garbelotto, UC Berkeley Plant Pathologist and UCCE Specialist. In a blitz, volunteers meet for a short training on SOD symptom collection methods, they go out to look for and symptomatic leaves from CA bay trees, then they return these samples to the lab. The lab processes the samples and the results are reported back to the volunteers and the community at large. The data also contributes to Dr. Garbelotto's SOD research. In this way the general public learns about SOD and support the research at the same time.

With support and training from Dr. Garbelotto and his lab, the Sonoma County MG SOD Specialists hosted a SOD Blitz the weekend of April 17 at two locations, Healdsburg and Santa Rosa. Fifty-eight volunteer Sonoma County residents met with MG SOD Specialists on a Saturday morning to learn the procedures for contributing to the blitz. They learned what to look for, where to look, how to collect a viable sample and how to document it. Over the next 36 hours they spread out to find symptomatic California bay laurel leaves in Santa Rosa, Sonoma, Occidental, Forestville, Windsor, Healdsburg, Alexander Valley, Cloverdale, Lake Sonoma, and two coastal state parks. They returned with collections from 245 trees. After culturing and polymerase chain reaction (PCR) lab analysis, results showed 29 trees were positive for SOD, or 11.8% of the trees sampled.

Benefits of the SOD Blitz:

- The blitz revealed actively infected trees. This is valuable to property owners and land managers who, by learning the phenology of the pathogen, can tailor land management activities to reduce spread of *P. ramorum* infection.

- The blitz revealed that there were infections in areas we did not know were infected. Trees in two residential areas, one just north of Santa Rosa, and another in an older established Santa

Rosa neighborhood had active infections. Because of this find, the MG SOD Specialists will now follow up by targeting educational efforts to homeowners in these neighborhoods.



Matteo Garbelotto presents results of the 2010 Sonoma County SOD Blitz at a public meeting, 6/19/2010.

✿ The blitz was an opportunity for people to learn about SOD in their neighborhoods and parks through active hands-on environmental education. The number of samples collected during this blitz—245—is second only to the 253 samples collected at the Santa Lucia Preserve blitz in 2008. It appears that relative to other areas, Sonoma County residents take a very active role in learning about sudden oak death in their environment.

Training

Two training sessions, concerning the SOD and mapping SOD in Sonoma County, were given by Dr. Garbelotto. The balance of the training sessions were led by Lisa Bell and focused on outreach content, delivery and methods. See the table below.

Five Sonoma County Master Gardener SOD Specialists attended the California Oak Mortality Task Force annual meeting at Dominican University in June.

Benefits of the COMTF Annual Meeting:

✿ The field trip to a China Camp—hard-hit by SOD—inspired the idea for a new direction in this outreach program. A group of three Sonoma County MG SOD Specialists are now developing outreach for state and regional park employees and recreational users.

✿ The Sonoma County MG SOD Specialists pursued contacts for this coming year’s training sessions including a visit Dr. Dave Rizzo’s Plant Pathology lab at UC Davis; a talk by Chris Lee, Sudden Oak Death Program Coordinator with UCCE Humboldt; participation in a multi-county tanoak field study with Lee; and a field visit to SOD remediation field sites overseen by Jill Butler, a CALFIRE forester based in Santa Rosa.

Training date	Description of training	SOD Specialists attending
1/12/2010	Outreach planning meeting, led by L. Bell	8
3/16/2010	Meeting on presentation content , led by L. Bell	8
3/26/2010	Outreach planning , led by L. Bell	6
4/10/2010	Dr. Garbelotto, on how to run a SOD Blitz	6
4/15/2010	Blitz presentation practice, led by L. Bell	7
6/9-10/2010	COMTF Annual Meeting in San Rafael	5
6/19/2010	Dr. Garbelotto speaking about blitz results	10